



» STEAMBOW »

The world's most innovative crossbow system



FOLDABLE

limbs fold alongside the stock for easier transport



SELF-COCKING

powered by high-pressure air, zero effort, silent cocking, reloads in seconds



UNCHANGED PRECISION

functionally identical to a conventional crossbow - all handling and the precision are the same as for the basic crossbow



ENHANCED SAFETY

You decide when to cock the limbs, ideally just before firing. Safe decocking with the push of a button.

THE NEXT GENERATION OF CROSSBOWS.

Steambow is a combination of a conventional crossbow and our patented rapid cocking system. The crossbow can be cocked, with zero effort, within seconds and the limbs become foldable for easier transport. Just before firing, a Steambow is functionally identical to a conventional crossbow - all handling and the precision are the same as for the basic crossbow.

As the energy source we use the same small, light HPA bottles and CO₂ capsules that have been used and proven in paintball sports for decades.

READY TO FIRE IN JUST A FEW SECONDS.



1

Steambow in transport configuration: The limbs are folded away, the compressed air bottle is not attached.



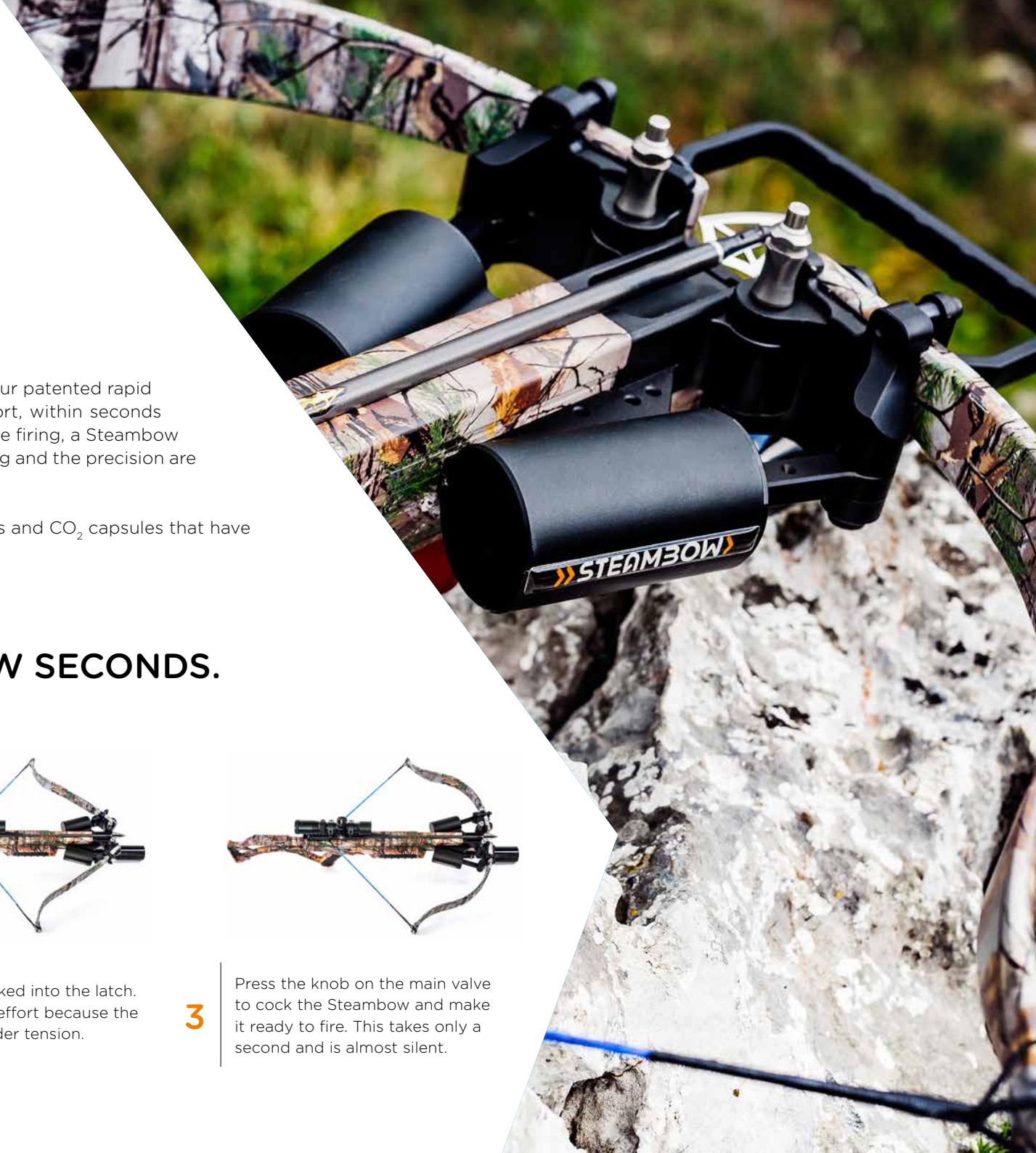
2

The string is hooked into the latch. This requires no effort because the limbs are not under tension.



3

Press the knob on the main valve to cock the Steambow and make it ready to fire. This takes only a second and is almost silent.



STEAMBOW ADVANTAGES



SILENT COCKING

You can cock the limbs almost silently within one second. When you relax the limbs after firing, a quiet hissing can be heard as the air escapes.



TOOL-FREE STRING REPLACEMENT

The limbs of a conventional crossbow are under great tension even when the bow is not cocked. The string cannot be removed from the limbs without special tools and jigs. With a Steambow, you need no tools whatsoever to replace the string.



SAFE LOADED STORAGE

A Steambow can be stored and transported with a loaded bolt at zero risk of discharge. The optional disposable capsules also allow a Steambow to be made ready in seconds after being stored for years.



RAPID FIRE

The string is hooked into the latch with the limbs relaxed, the next bolt is loaded, and the Steambow is ready to be cocked and fired.



FOLDABLE FOR EASIER TRANSPORT

You can use the quick-release pins to fold the limbs alongside the stock in seconds. This makes the crossbow narrow enough to fit easily in a normal bag.



LONGER LIFE

The limbs of a conventional crossbow are always under tension and can lose their strength over time, especially when exposed to high temperatures. As the limbs of a Steambow are under no tension until pressure is applied, this risk is eliminated.



ENHANCED SAFETY

You decide when to cock the limbs, ideally just before firing. This precludes many dangerous situations.



VERSATILITY

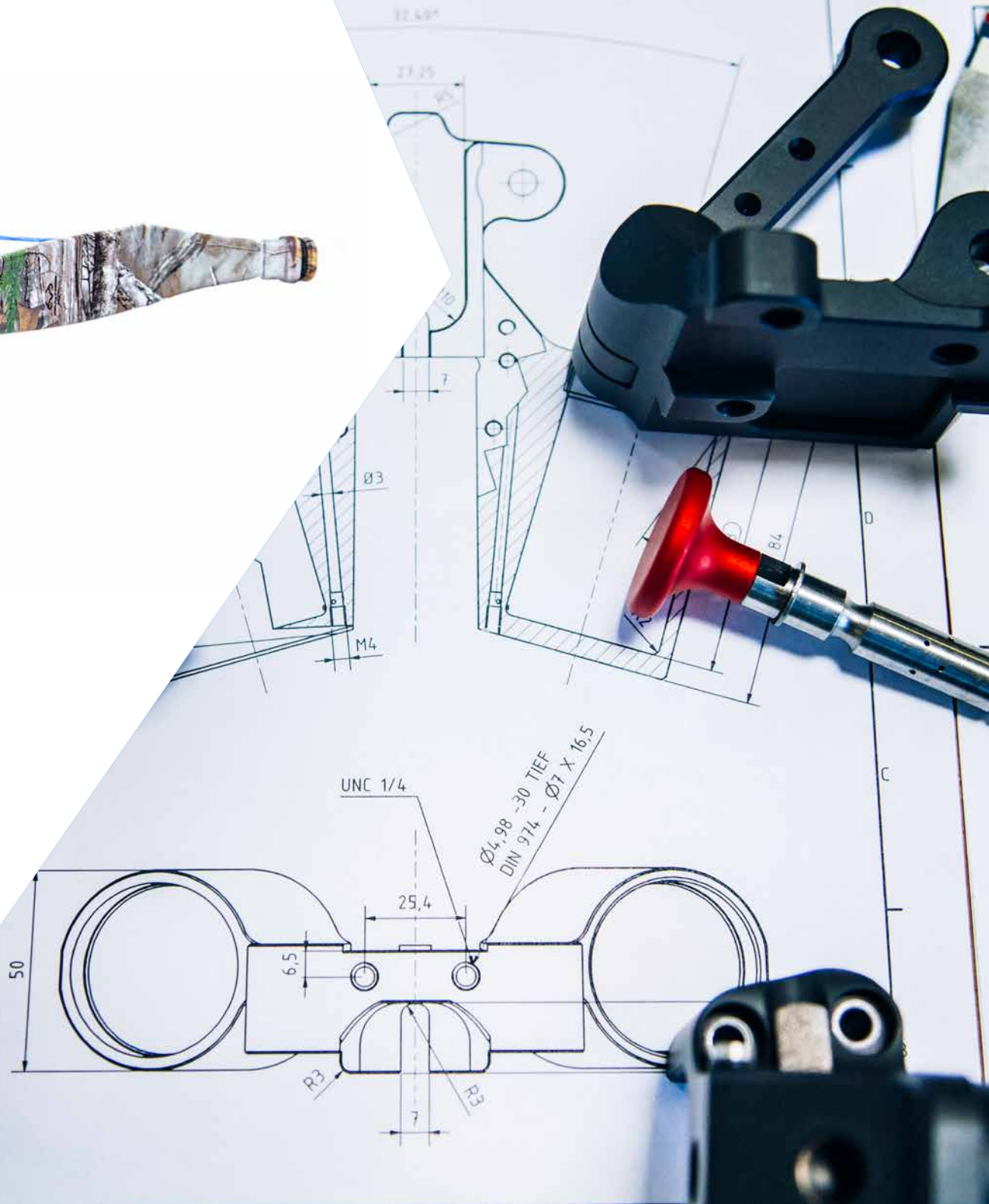
The automatic cocking function allows you to cock the Steambow without effort in any orientation and position, including in small tree stands.



PRECISION MANUFACTURING

Made of high-quality aluminum alloys on state-of-the-art CNC machines. All surfaces are hard anodized with a matte finish. This ensures high performance and a long life.





Steambow was born in cooperation between passionate cross-bow archers and a precision parts manufacturer with over 15 years of experience in the production of components for the aviation, automotive, and defense industries.

To guarantee the highest of quality and a long service life we use professional CAD software for the designs and drawings and manufacture all parts on state-of-the-art five-axis CNC machines. All parts are milled from solid aluminum alloy blocks and then hard anodized. We test every Steambow before delivering it.

THE POWERUNIT

We have invested over two years of engineering into the development and refinement of our power unit – but the underlying concept is simple: The limbs are able to pivot freely and are not cocked until immediately before you fire by moving the limb bracket. Because the required energy is provided by compressed air, the cocking function is silent, smooth, and elegant. The same compressed air bottles and CO₂ capsules that are used in paintball serve as the power source.



» Our smallest and lightest bottle (0.2 liters at 200 bar) is sufficient for up to 5 shots at full power.

» The power unit is fitted with a standard paintball bottle connector (ASA adapter). It is compatible with all standard compressed air bottles and CO₂ capsules. One fill is sufficient for up to 50 shots depending on the fill pressure and bottle or capsule volume (1.1 liters, 300 bar). You can also use a remote line to carry the bottle on your belt.



If you intend to use your Steambow more frequently, we recommend that you buy or rent a larger compressed air tank. These are available in sizes from 4 to 100 liters. With such a tank, you can easily store enough compressed air for an entire year at home.



Disposable CO₂ capsules are easy to use and convenient. They are inexpensive, can be stored for a very long time without losing pressure, and are sufficient for up to 5 shots at full power.



Scuba tanks are inexpensive to purchase, compact, light, and have a very long service life. You can have these tanks filled at any dive shop or paintball shop for a small fee. You can then use an adapter to easily fill your paintball bottles from the scuba tank.



A 1.1 liter carbon fiber bottle with a storage pressure of 300 bar is ideal for carrying on your belt and has enough energy for up to 50 shots at full power.

There are plenty of good reasons to use compressed air as a power source. Compressed air allows for silent cocking, can store a tremendous amount of energy, and is very safe.

Steambow uses the same compressed air bottles as are used in paintball and for conventional pneumatic airguns.

There are many ways to supply your Steambow with compressed air, ranging from disposable CO₂ capsules and larger supply tanks from which you fill your air bottles all the way to your own high pressure air compressor.



We recommend that you use a remote line for larger bottles. Such a hose connector kit allows you to conveniently carry the bottle on your belt.



>> STEAMBOW >

MICRO 355

Our Steambow that is based on the Micro 355 is one of the most compact recurve crossbows in the world – and it is of course self-cocking and collapsible. But don't be fooled by its small size – the Micro 355 has plenty of power and can fire a bolt at around 108 meters or over 350 feet per second.

Because it is so compact, the Steambow Micro 355 is ideal for tighter spaces. Regardless of whether you are in the woods, dense underbrush, or a small room, this Steambow can be brought to bear quickly.



TECHNICAL DATA MICRO 355

Bolt speed:	355 fps bzw. 108 m/s
Draw weight:	280 lbs. bzw. 130 kg
Power stroke:	10" bzw. 25,4 cm
Total weight:	7.4 lbs. Bzw. 3,35kg
Overall length:	28.45" bzw. 72 cm

MODELS

» STEAMBOW »

BULLDOG 400

The “Bulldog 400” from the Canadian manufacturer Excalibur is not only a perfect combination of speed, power and ergonomics but is also one of the strongest hunting crossbows on the market. It reaches arrow speeds of up to 400 feet per second.

In combination with our PowerUnit it becomes a Steambow: foldable and self-cocking.



TECHNICAL DATA BULLDOG 400

Bolt speed:	400 fps or 120 m/s
Draw weight:	280 lbs. or 130 kg
Power stroke:	14" or 35,56 cm
Total weight:	8,4 lbs. or 3,8 kg
Overall length:	30.7" or 78 cm

STEAMBOW – ACCESSORIES

Our extensive range of accessories offers tailored solutions for all of these applications, and we are constantly innovating to make our Steambow even better.



DO YOU HAVE QUESTIONS OR A SUGGESTION?

Then get in touch with us! We are always ready to help our customers and will do our best to make sure that you have the best possible experience with your Steambow.

support@steambow.com

1 HOW CAN I PRACTICE WITH SUCH A POWERFUL CROSSBOW?

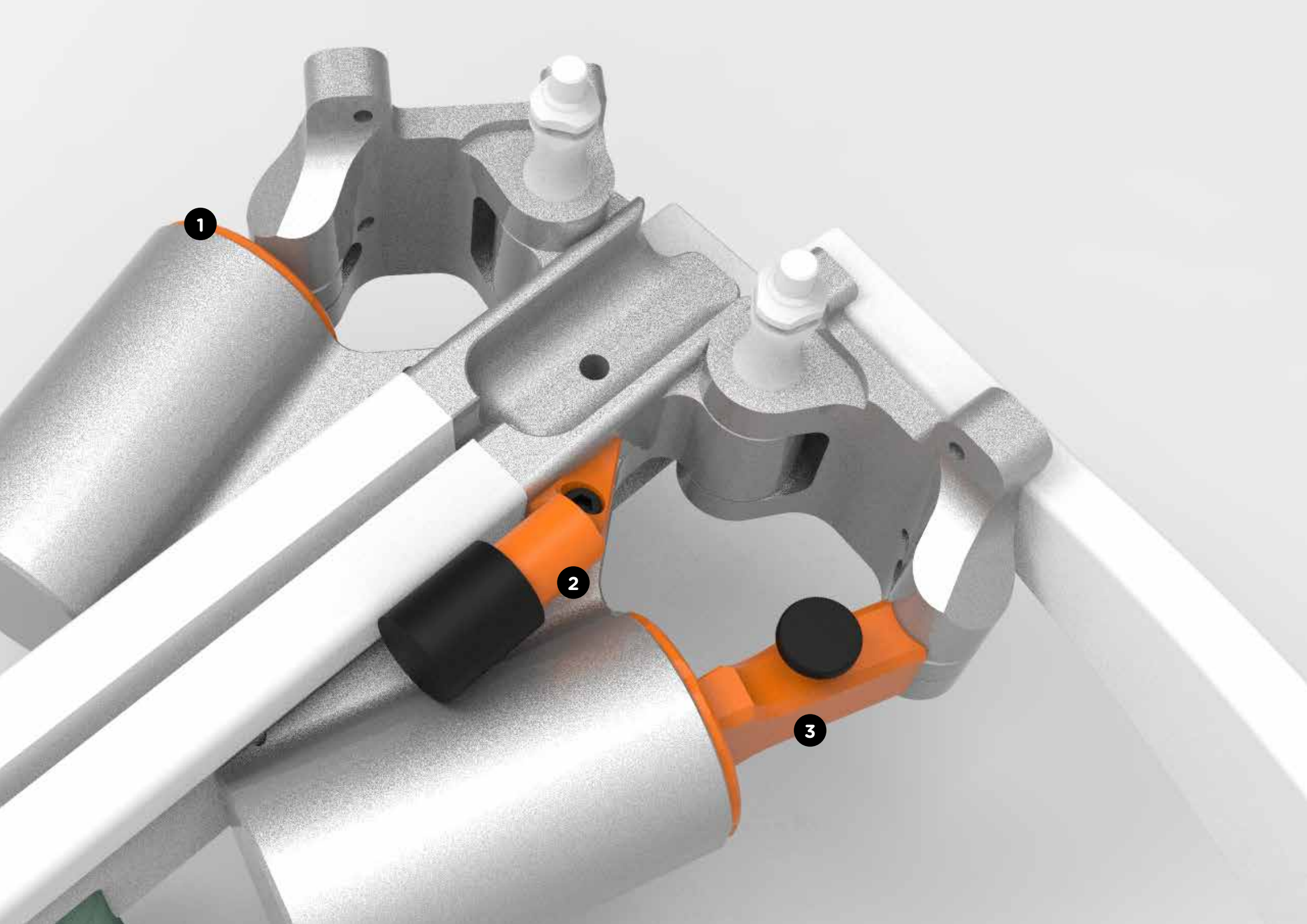
It is no fun to pull out bolts that are buried deep in a target, and many static and 3D archery ranges don't allow the use of powerful crossbows. We found an elegant solution. Our easy-to-install **power reduction kit** substantially reduces the power of your Steambow. This not only reduces how much air you use and the wear on your Steambow, but also makes it easy to pull the bolts out of the target.

2 CAN I MAKE MY STEAMBOW EVEN QUIETER?

In some applications, it is important to make no noise. Our optional **string silencers** make each shot considerably quieter than it already is. These silencers reduce the vibration of the string when you fire and make the Steambow whisper quiet. We also offer an **external sound suppressor** to reduce the sound of the air that escapes when you uncock your Steambow.

3 WHAT DO I DO WHEN I RUN OUT OF COMPRESSED AIR?

We also have a solution for this. Our **manual cocking system** lets you use your Steambow just like any other crossbow and cock it by hand or with a cocking aid.



1

2

3



Steambow GmbH

Baeckerstrasse 1 | 2433 Margarethen am Moos | Austria
+43 2230 20 270 150 | office@steambow.com

www.steambow.com